



The CMA Welfare Trust Ltd, 377 Wilmslow Road, Heald Green, Cheadle SK8 3NP
T +44 (0)161 437 1093 E mailbox@cmatrust.org W www.cmatrust.org

In the name of Allah, the Most Gracious, the Most Merciful

The CMA Bereavement Procedure

In the event of an unfortunate death in a Muslim family, the burial has to take place as soon as possible. To make this possible as soon as you experience a death in the family despite the sadness and distress you must start the funeral process as soon as possible.

To help you with this process, the CMA recommend that you follow the steps 1 to 10 as below.

Step 1. Which Funeral Service do you want to use?

Muslim Funeral Services (MFS)

- a) Dar-ul-Uloom Mosque: Br Khalil : 07815 561 818
- b) Victoria Park Mosque: Qadir Ahmad Chohan: 07904 092 748

Step 2. In which Mosque would you prefer the Janazah prayer to be read?

- a) Inform relevant MFS to arrange the Janazah prayer at Dar-ul Uloom or Victoria Park
- b) For Cheadle (CMA) contact Br Saeed: 07775 624 196
- c) or Br. Zarif Mirza: 07775 840 843

Step 3. In which Cemetery would you want the burial to take place?

- a) Stockport: Mill Lane, Cheadle : 0161 480 5221
 - b) Manchester : Southern Cemetery : 0161 881 2208
- Choose the Muslim Cemetery & Inform MFS

Step 4. Obtain the death certificate from GP or Hospital

(please see overleaf for the process involved in obtaining the death certificate)

Step 5. Register the death with the Registrar of Births, Marriages & Deaths

Contact the Registrar of Births, Marriages & Deaths for the area of the deceased's residence.

- a) Stockport : 0845 644 4311
- b) Manchester : 0161 234 5555
- c) Macclesfield : 01625 423 463
- d) Trafford : 0161 912 3026

Step 6. Obtain the Burial Approval Slip from the Registrar & pass on the details to MFS

Step 7. MFS will arrange for the body to be collected and taken for "Ghusl"

The family is encouraged to be involved in the Ghusl process. Please follow the instructions from the MFS

Step 8. The body is wrapped in sheets of plain white cloth (kafan)

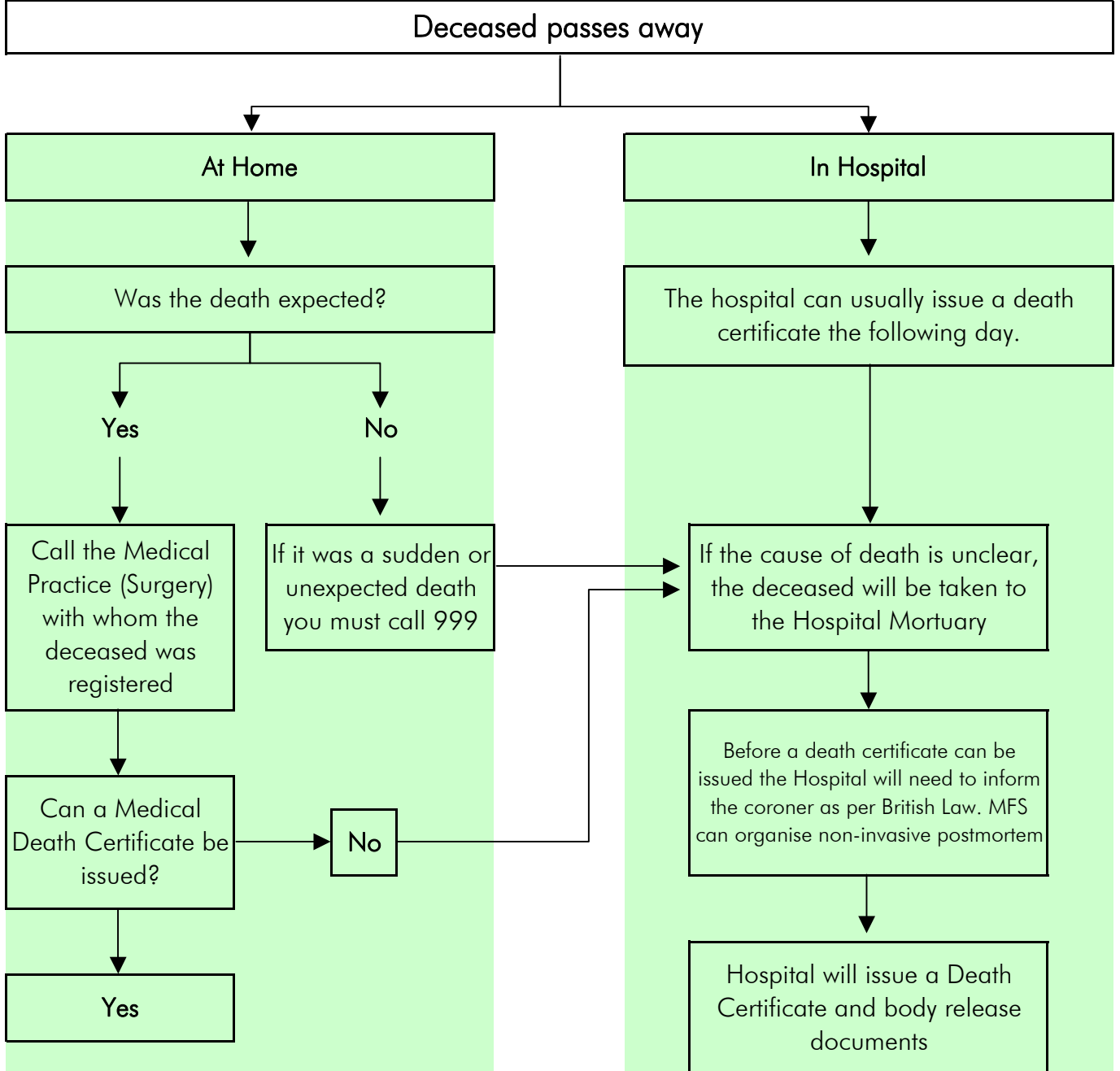
Step 9. The body is transported to your chosen mosque for the Janazah prayers

Step 10. Following the Janazah prayer the body is transported to your chosen cemetery

"Inna lillah wa inna ilayhi rajun"
To Allah (SWT) we belong and To Him we shall return.

Step 4 of Bereavement Procedure in detail

Process to Obtain the death certificate from GP or Hospital



Once the death certificate obtained, follow the steps 5 to 10 as detailed overleaf on "The CMA Bereavement Procedure sheet"

دعاء التعزية

أَنَّ لِلَّهِ مَا أَخَذَ وَلَهُ مَا أُعْطِيَ وَكُلُّ شَيْءٍ عِنْدَهُ بِأَجَلٍ مُّسَمًّى

To Allah (SWT) belong what has He taken, and what He left. Everything has got a written record.

أَعْظَمَ اللَّهُ أَجْرَكَ وَأَحْسَنَ عَزَاءَكَ وَغَفَرَ لِمَيِّتِكَ

May Allah (SWT) increase your reward, give you patience and forgive the dead person.